



AUTHORISED REPRESENTATIVE / DISTRIBUTED BY:
ROHEE MEDIC SDN BHD
Prioritize Your Health



6 IN 1

SARS-COV-2, INFLUENZA A&B ANTIGEN, RSV, ADV AND MP COMBINED DETECTION KIT (LATEX METHOD)

EASY TO USE
ONLY 4 STEPS
1. SAMPLING
2. BLENDING
3. ADD THE SAMPLE AND SOLUTION
4. READ THE RESULT AT 15 MINS

CONVENIENT
SUITABLE FOR EVERYONE USE

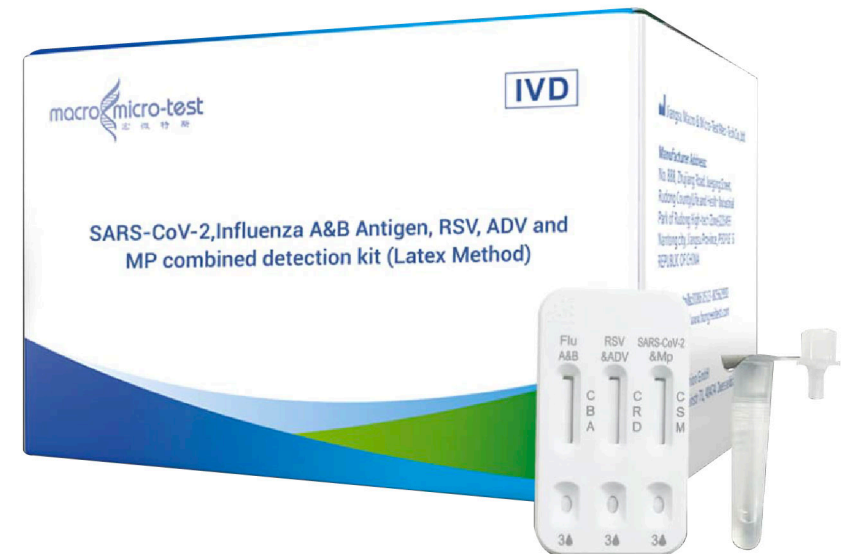
ACCURACY
HIGH SENSITIVITY & SPECIFICITY

ACCURATE DIAGNOSIS MADE SIMPLE !

**SAY GOODBYE TO MISDIAGNOSES WITH
MACRO & MICRO-TEST RAPID TESTS**

PROVEN ACCURACY YOU CAN TRUST !

**ACHIEVE 100% SENSITIVITY AND 100% SPECIFICITY
EVALUATED BY LOCAL TESTING FACILITIES**

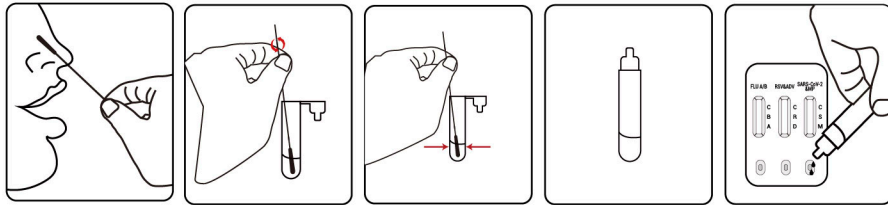




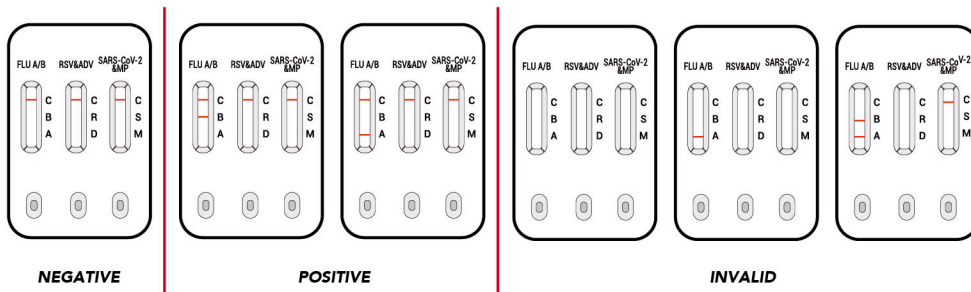
TEST PROCEDURE

NASOPHARYNGEAL SWAB

Rotate for at least 10 times and stay for at least 30s. Squeeze the head of the swab against the inner wall of the bottle at least 5 times. Take out and discard the swab. Add 80 µL (approximately 3 drops) of the processed sample extract into the sampling well on the test cassette.



INTERPRETATION



PRODUCT INFORMATION

CA. NO	HWTS-RT170
PRODUCT NAME	SARS-COV-2, INFLUENZA A&B ANTIGEN, RESPIRATORY SYNCYTIUM, ADENOVIRUS AND MYCOPLASMA PNEUMONIAE COMBINED DETECTION KIT (LATEX METHOD)
COMPONENTS	TEST CASSETTE, IN6-AG SAMPLE EXTRACTION SOLUTION
PACKAGING SIZE	20 TESTS/KIT

PERFORMANCE CHARACTERISTICS

SENSITIVITY, SPECIFICITY AND ACCURACY

SARS-COV-2, FLU A&B ANTIGEN, RSV, ADV AND MP COMBINED	RT-PCR		TOTAL
	POSITIVE	NEGATIVE	
POSITIVE	100	1	101
NEGATIVE	4	615	619
TOTAL	104	616	720
RELATIVE SENSITIVITY	96.15% (90.44% - 98.94%)		
RELATIVE SPECIFICITY	99.84% (99.10% - 100.00%)		
ACCURACY	99.31% (98.39% - 99.77%)		
KAPPA	0.972		

100% SENSITIVITY AND 100% SPECIFICITY EVALUATED BY LOCAL TESTING FACILITY

SARS-COV-2, FLU A&B ANTIGEN, RSV, ADV AND MP COMBINED	RT-PCR		TOTAL
	POSITIVE	NEGATIVE	
POSITIVE	92	2	94
NEGATIVE	7	619	626
TOTAL	99	621	720
RELATIVE SENSITIVITY	92.93% (85.97% - 97.11%)		
RELATIVE SPECIFICITY	99.68% (98.84% - 99.96%)		
ACCURACY	98.75% (97.64% - 99.43%)		
KAPPA	0.946		

100% SENSITIVITY AND 100% SPECIFICITY EVALUATED BY LOCAL TESTING FACILITY

SARS-COV-2, FLU A&B ANTIGEN, RSV, ADV AND MP COMBINED	RT-PCR		TOTAL
	POSITIVE	NEGATIVE	
POSITIVE	102	2	104
NEGATIVE	7	609	616
TOTAL	109	611	720
RELATIVE SENSITIVITY	93.58% (87.22% - 97.38%)		
RELATIVE SPECIFICITY	99.67% (98.82% - 99.96%)		
ACCURACY	98.75% (97.64% - 99.43%)		
KAPPA	0.950		

100% SENSITIVITY AND 100% SPECIFICITY EVALUATED BY LOCAL TESTING FACILITY

SARS-COV-2, FLU A&B ANTIGEN, RSV, ADV AND MP COMBINED	RT-PCR		TOTAL
	POSITIVE	NEGATIVE	
POSITIVE	101	3	104
NEGATIVE	9	608	616
TOTAL	109	611	720
RELATIVE SENSITIVITY	92.66% (86.05% - 96.78%)		
RELATIVE SPECIFICITY	99.51% (99.51% - 99.90%)		
ACCURACY	98.47% (97.28% - 99.23%)		
KAPPA	0.939		

100% SENSITIVITY AND 100% SPECIFICITY EVALUATED BY LOCAL TESTING FACILITY

SARS-COV-2, FLU A&B ANTIGEN, RSV, ADV AND MP COMBINED	RT-PCR		TOTAL
	POSITIVE	NEGATIVE	
POSITIVE	89	-	89
NEGATIVE	6	626	631
TOTAL	95	625	720
RELATIVE SENSITIVITY	93.58% (86.76% - 97.65%)		
RELATIVE SPECIFICITY	100.00% (99.41% - 100.00%)		
ACCURACY	99.17% (98.20% - 99.69%)		
KAPPA	0.963		

100% SENSITIVITY AND 100% SPECIFICITY EVALUATED BY LOCAL TESTING FACILITY

SARS-COV-2, FLU A&B ANTIGEN, RSV, ADV AND MP COMBINED	RT-PCR		TOTAL
	POSITIVE	NEGATIVE	
POSITIVE	124	3	127
NEGATIVE	12	581	593
TOTAL	136	584	720
RELATIVE SENSITIVITY	91.18% (85.09% - 95.36%)		
RELATIVE SPECIFICITY	99.49% (98.51% - 99.89%)		
ACCURACY	97.92% (96.59% - 98.83%)		
KAPPA	0.930		